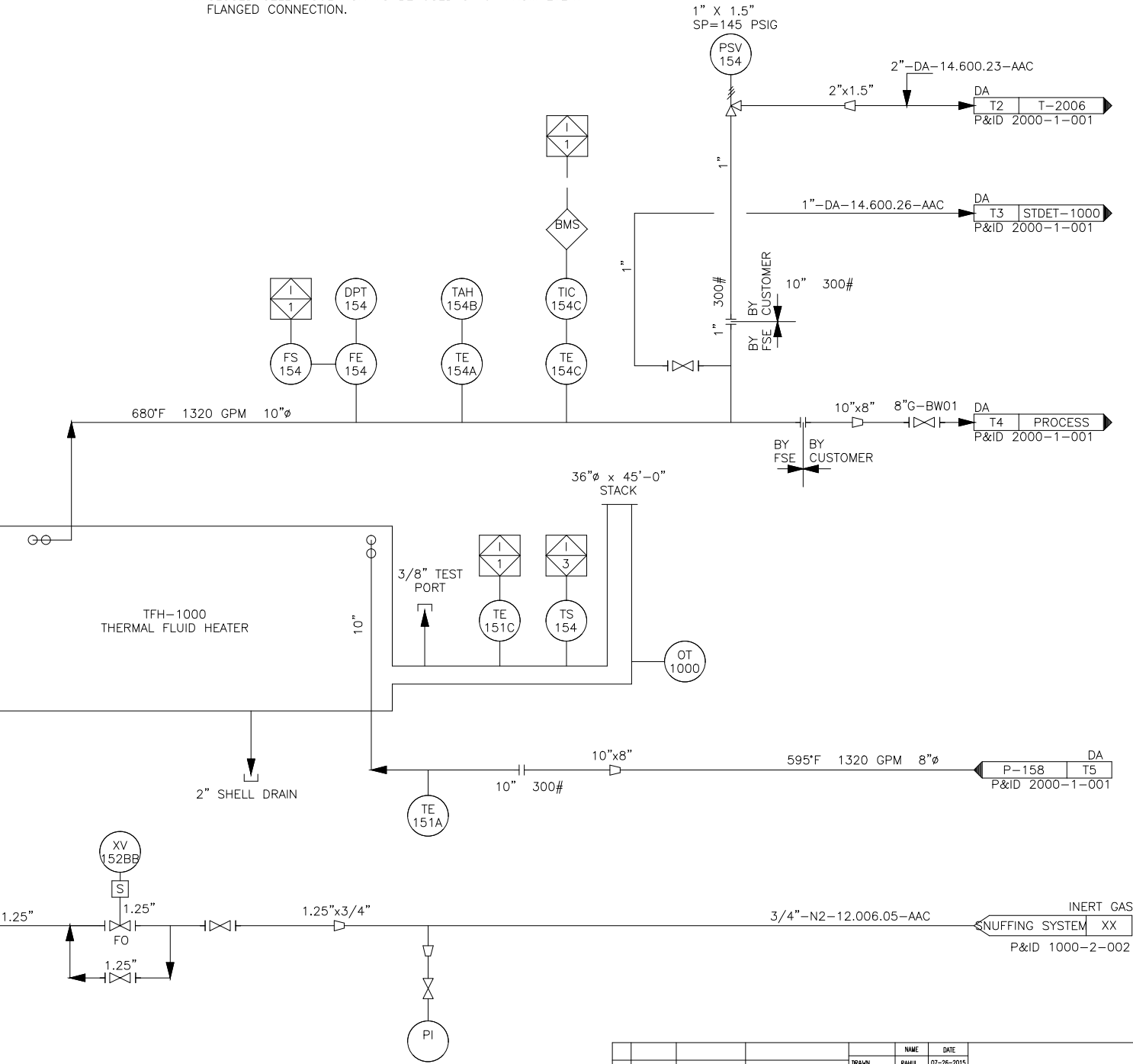


- NOTES:
1. HEATER DESIGNED PER ASME SECTION VIII, DIV 1
DESIGN PRESSURE: 250 PSIG
DESIGN TEMPERATURE: 750°F.
 2. VENTS TO BE LOCATED AT HIGH POINT IN SYSTEM.
 3. DRAINS TO BE LOCATED AT LOW POINTS IN SYSTEM.
 4. SLOPE LINE DOWN TO DRAIN TANK.
 5. MOUNT GAS TRAIN AS CLOSE TO BURNER INLET AS POSSIBLE SO THAT ALL COMPONENTS ARE EASILY ACCESSIBLE FOR SERVICING.
 6. NOT ALL REDUCERS OR REDUCING TEE'S ARE NECESSARILY SHOWN ON P & ID DRAWING. PIPING DRAWINGS SHOULD BE USED AS A REFERENCE.
 7. INSULATE ALL PIPE LINES EXCEPT HEAT-UP LINE, OVER FLOW LINES, DRAINS, AND VENTS.
 8. ALL GASKETS AND SEALS SHALL BE COMPATIBLE WITH THE HEAT TRANSFER MEDIA AND SUITABLE FOR THE TEMPERATURE AND PRESSURE EXPOSED.
 9. DRAIN TANK VENT MUST BE ROUTED TO OUTSIDE.
 10. PSV 154 SHIPS LOOSE, TO BE LOCATED AND MOUNTED IN FIELD.
 11. CLOSED CELL INSULATION TO BE USED 5'-0" FROM EVERY FLANGED CONNECTION.



PROPRIETARY AND CONFIDENTIAL
THE INFORMATION CONTAINED IN THIS
DRAWING IS THE SOLE PROPERTY OF
JAYRO DIESEL, INC. ANY REPRODUCTION
IN PART OR AS A WHOLE
WITHOUT THE WRITTEN PERMISSION OF
JAYRO DIESEL, INC. IS PROHIBITED.

					NAME	DATE	TITLE: <
--	--	--	--	--	------	------	---